

# CF 55

## Heat Meter Calculator

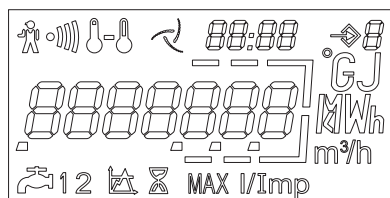
### Key Features

- ▶ Complex Tariff Manager
- ▶ Powerful Datalogger
- ▶ Plug and Play Communication Boards
- ▶ Delta T 1°K
- ▶ 4 wire



### Multifunctional Display

The multifunctional display facilitates easy reading, providing fast and clear access to the most important billing data. The display enables the diagnosis of failures alarms from a single glance. The LCD has a long life time and through a push button you get easily access to each level of data.



The CF 55 is the latest generation of calculators issued from Actaris' CF Heat Meter Family.

It is designed for use by Heat/Cooling Utilities which face today's complex networks management.

High performance tools help the management of contracts with end clients, other tools gather all data necessary to analyse network performance. All different data is available directly or through the wide communication choices.

### Applications

Heating, Cooling and combined applications.

### Standards Compliance

- Class 2.0 acc. EN 1434
- Env. Class C acc. EN 1434
- PTB approved

### Benefits

- Easy to use,
- Works with any flow meter with a pulse output,
- High value added functions,
- Clear informations,
- Powerful capacities.

#### ▶ Loop 1

##### Billing Data

- Energy
- **Cooling energy\***
- Volume
- LCD test
- **External water meter 1/2\***

\* *Optional*

#### ▶ Loop 2

##### Additional Information

- Flow rate
- Power
- Supply temperature
- Return temperature
- Temperature difference
- Operating time
- **Power peak date + time\***
- **Flow peak date + time\***
- **Temperature peak date + time\***
- **Instantaneous bonus\***
- **Cumulative bonus\***
- Time in alarm
- Temperature alarm
- Flow alarm
- Overflow alarm
- Power supply alarm
- M-Bus primary address
- M-Bus secondary address
- M-Bus baud rate
- **Pulse value water meter 1/2\***

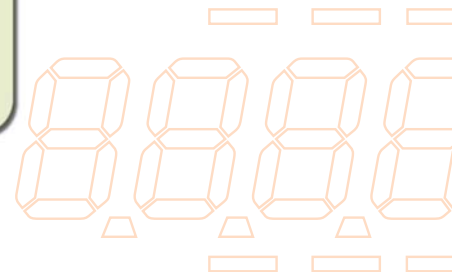
\* *Optional*

#### ▶ Loop 3

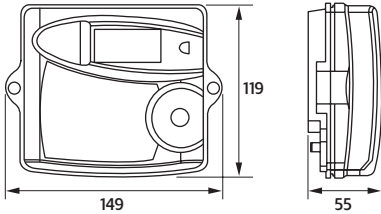
##### Fixed Date Reading

- Fixed date energy 1...13
- Fixed date cooling energy 1...13
- Fixed date volume 1...13
- **Fixed date water meter 1/2 1...13\***
- Software version

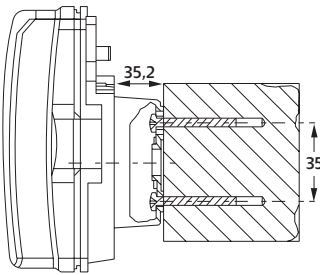
\* *Optional*



## Dimensions



### ► Wall mounting



## Option Boards



The CF 55 is pre-equipped for communication. Different option boards can be plugged simply to the meter and start working automatically.

The following option boards are available:

- Board 1: **2xM-Bus + 2 external Water meters**
- Board 2: **Modem + 2 external Water meters**
- Board 3: **LON + 2 external Water meters**
- Board 4: **M-Bus + E/V Repetition**
- Board 5: **M-Bus + 2 external Water meters**
- Board 6: **RF + 2 external Water meters**
- Board 7: **RS232 + 2 external Water meters**

## Peak

Three different base units are traced for its peak values in this tool. The integration time is adaptable to the different needs going from 1 minute to 24 hours for fixed window time sets. All values are time stamped for further comprehension and analysis and stored throughout the 13 fixed date reading months for permanent follow up.

Power (W)  
Flow (m<sup>3</sup>/h)  
Supply Temperature (°C)

## Tariffication

The double tariffication is an advanced tool giving the possibility to utilities and clients set high performance network management indicators. It traces both the quality of supply

as well the quality of consumption giving both parties a major advantage in the cost effective heat usage.

Power (W)  
Flow (m<sup>3</sup>/h)  
Supply Temperature (°C)  
Return Temperature (°C)

## Data Logging

This is the exploitation, s tool by excellence. Studies of the network performance, analysis of determined consumptions or simply the trace of a seasons pattern are possible with this powerful tool.

Select up to 6 registers from a list containing above 20 available and log them through 1008 steps programmable from a minute by minute up to weekly or monthly registration.

## Technical Characteristics

### CF 55 Energy Calculator

Metrology exceeds	PTB, DRIRE, OIML, EN 1434
Temperature range	0 ... 180 °C
Temperature difference	1 ... 160 °C
Temperature sensors	Pt100 or Pt500, 4 wires
Display	LCD - 7 digits
Back-up memory	EEPROM
Power supply (optional)	6 or 12 year Lithium battery - 230 V main power supply
Protection class	IP64
Environmental class	Class C acc. EN 1434
Ambient temperature	5 ... 55 °C
Optical interface	acc. to EN 60870-5

### CF 55 Pulse Value

L/imp or imp/L	1, 2.5, 10, 25, 100, 250, 1000 L/imp or 2.5, 4.5, 7.5, 10, 25 imp/L
----------------	---

### ► M-Bus

Standard reference	EN 1434-3
Baud rate	300 to 9600 baud
Data in standard mode	Energy, Volume, Flow, Temperatures (supply, return, difference), Time in error, Operation time, Date and time, Volume of water meters 1&2, Firmware version

For more information, please contact your local agency.



### Actaris

9, rue Ampère

71031 Mâcon cedex - France

For more information, see [www.actaris.com](http://www.actaris.com)

tel +33 3 85 29 39 00

fax +33 3 85 29 38 58