

# PORTAFLOW 220

## Portable Ultrasonic Flowmeter User Manual



**micronics**  
Through measurement comes control

**Micronics Ltd**, Knaves Beech Business Centre, Davies Way, Loudwater,  
High Wycombe, Bucks HP10 9QR.

**Telephone:** +44 (0)1628 810456 **Facsimilie:** +44 (0)1628 531540 **E-mail:** sales@micronicsltd.co.uk

[www.micronicsflowmeters.com](http://www.micronicsflowmeters.com)



# Table of Contents

<b>1: General Description</b>	<b>1</b>
1.1 Introduction	1
1.2 Principles of Operation	2
1.3 Supplied Hardware	3
1.4 Portaflow 220 Instrument	4
1.4.1 Connectors	4
1.4.2 Keypad	5
1.4.3 Power supply and battery charging	6
1.5 Transducers	6
<b>2: Installation</b>	<b>7</b>
2.1 Transducer Positioning	7
2.2 Transducer Attachment	8
2.2.1 Preparation	8
2.2.2 Attaching the guide rails	8
2.2.3 Fitting the transducers	9
<b>3: Operating Procedures</b>	<b>11</b>
3.1 Setting-up the Instrument	12
3.1.1 Using the instrument for the first time	12
3.1.2 Enabling/disabling the backlight	13
3.2 Using the Quick Start Menu	13
3.3 Using the System at a Regularly Monitored Location	16
3.4 Managing Named Sites	17
3.4.1 Setting up a new site	18
3.4.2 Changing a site name	18
3.5 Instrument Calibration	19
3.5.1 Adjusting the zero cut-off	19
3.5.2 Adjusting the set zero flow offset	19
3.5.3 Adjusting the calibration factor	20
3.5.4 Adjusting the roughness factor	20
3.5.5 Adjusting the damping factor	21
3.6 Performing Monitoring Functions	22
3.6.1 How to measure totalised flows (manually)	22
3.7 Configuring the Portaflow 220 Interfaces	23
3.7.1 How to turn the 4-20mA output OFF/ON	23
3.7.2 4-20mA signal calibration and ranging	23
3.7.3 How to convert the measured current to flow rate	25
3.7.4 How to turn the pulse output OFF/ON	25
3.7.5 Generating a 'Test' pulse	25

3.7.6 Pulse output signal calibration	26
<b>4: Maintenance &amp; Repair</b>	<b>27</b>
<b>5: Troubleshooting</b>	<b>29</b>
5.1 Overview	29
5.2 General Troubleshooting Procedure	30
5.3 Warning & Status Messages	31
5.4 Test Block	33
5.5 Microprocessor Reset Facility	34
5.6 Diagnostics Display	34
<b>Appendix A: Specification</b>	<b>35</b>

# 1: General Description

## 1.1 Introduction

This manual describes the operation of the Micronics Portaflow 220 portable flowmeter. The flowmeter is designed to work with clamp-on transducers to enable the flow of a liquid within a closed pipe to be measured accurately without needing to insert any mechanical parts through the pipe wall or protrude into the flow system.

Using ultrasonic *transit time* techniques, the Portaflow 220 is controlled by a micro-processor system which contains a wide range of data that enables it to be used with pipes with an outside diameter ranging from 13mm up to 1000mm (depending on model) and constructed of almost any material. The instrument will also operate over a wide range of fluid temperatures.

The Portaflow 220 series comprises two models which are identical in operation but designed to be used with a different range of pipe diameters. The PF220A can be used with pipes in the range 13mm – 115mm and the PF220B with pipes in the range 50mm – 1000mm.

Easy to operate, the Portaflow 220 standard features are:

- Large, easy to read graphic display with backlighting.
- Simple to follow dual function keypad.
- Simple 'Quick Start' set up procedure.
- Continuous signal monitoring.
- Pulse output.
- 4-20mA, 0-20mA or 0-16mA output.
- Rechargeable battery.
- Battery management.
- Diagnostics.

Volumetric flow rates are displayed in l/h, l/min, l/sec, gal/min, gal/h, USgals/min, USgals/h, Barrel/h, Barrel/day, m<sup>3</sup>/s, m<sup>3</sup>/min, m<sup>3</sup>/h. Linear velocity is displayed in metres or feet per second.

When operating in the 'Flow Reading' mode the total volumes, both positive and negative, are displayed up to a maximum 12-digit number.

The flowmeter can be used to measure clean liquids or oils that have less than 3% by volume of particulate content. Cloudy liquids such as river water and effluent can be measured along with cleaner liquids such as demineralised water.

Typical Portaflow 220 applications include:

- River water.
- Seawater.
- Potable water.
- Demineralised water.
- Treated water.

## 1.2 Principles of Operation

When ultrasound is transmitted through a liquid the speed at which the sound travels through the liquid is accelerated slightly if it is transmitted in the same direction as the liquid flow and decelerated slightly if transmitted against it. The difference in time taken by the sound waves to travel the same distance but in opposite directions is therefore directly proportional to the flow velocity of the liquid.

The Portaflow 220 system employs two ultrasonic transducers attached to the pipe carrying the liquid and compares the time taken to transmit an ultrasound signal in each direction. If the sound characteristics of the fluid are known, the Portaflow microprocessor can use the results of the transit time calculations to compute the fluid flow velocity. Once the flow velocity is known the volumetric flow can be easily calculated for a given pipe diameter.

The Portaflow system can be set up to operate in one of four modes determined mainly by the pipe diameter and the transducer set in use. The diagram below illustrates the importance of applying the correct separation distance between the transducers to obtain the strongest signal.

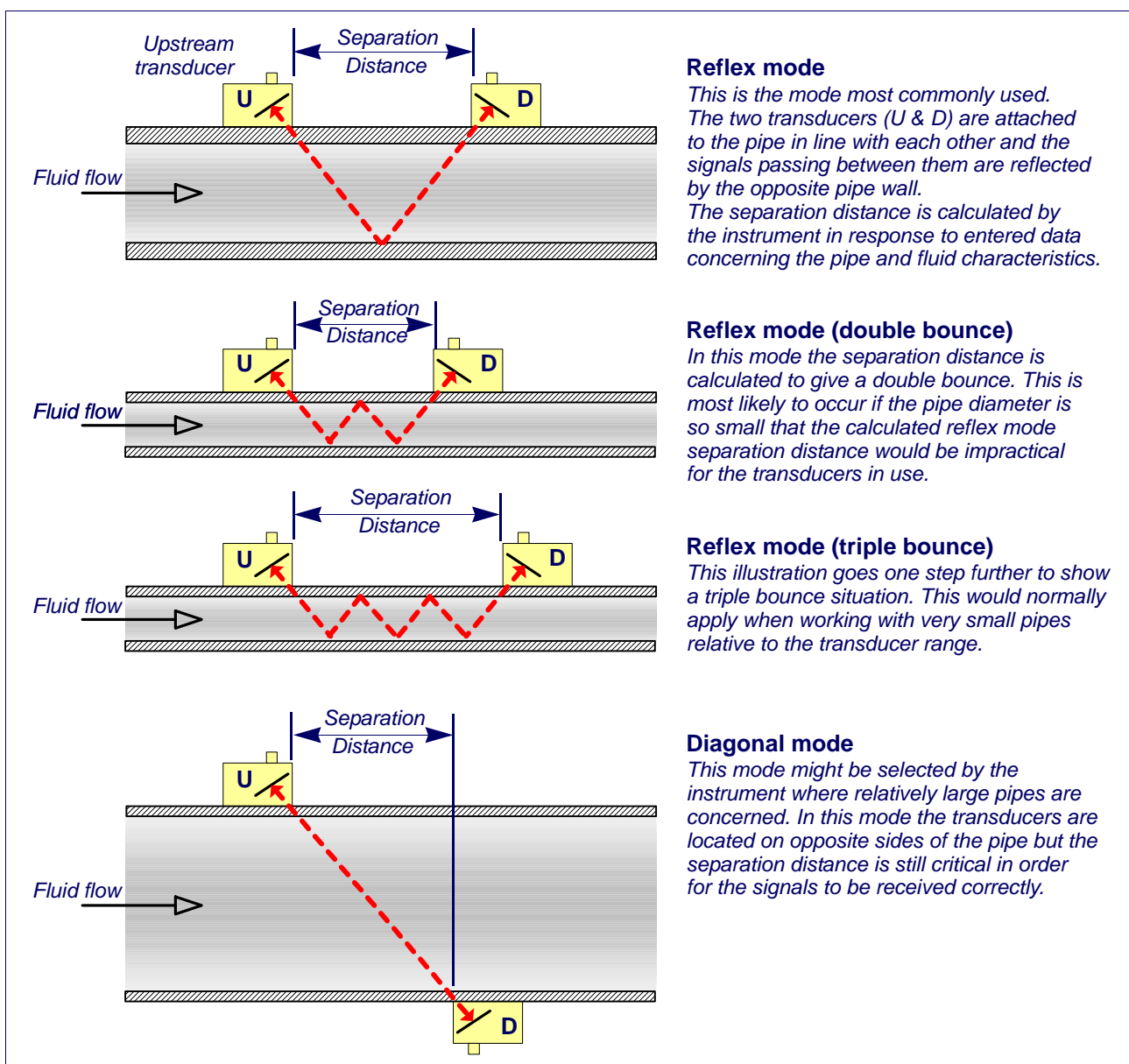


Figure 1.1 Operating modes

### 1.3 Supplied Hardware

The Portaflow equipment is supplied in a rugged polypropylene carrying case fitted with a foam insert to give added protection for transportation. The supplied components are shown in [Figure 1.2](#).



**Figure 1.2 Standard Portaflow equipment**

#### Standard equipment

- Portaflow 220 instrument with backlit graphic display.
- Power supply - with UK, US, European adaptors. 110/240VAC.
- 4-20mA/Pulse Output cable.
- 2 lengths of chain.
- Test block.
- Transducer cables (x2) 2 metres long (one red and one blue).
- Transducer set (x2) – type 'A' or type 'B' depending on model.
- Set of guide rails used for mounting the transducers.
- Ruled separation bar (2-piece).
- Ultrasonic couplant with syringe dispenser used when mounting the transducers.
- Manual.

## 1.4 Portaflow 220 Instrument

The Portaflow 220 is a microprocessor controlled instrument operated through a menu system using an inbuilt LCD display and keypad. It can be used to display the instantaneous fluid flow rate or velocity, together with totalised values.

The instrument can also provide a current or variable 'pulse' output proportional to the detected flow rate. These outputs, which can be used with a range of external interface devices such as those found in building management or site monitoring systems, can be calibrated to suit a particular flow range.

### 1.4.1 Connectors

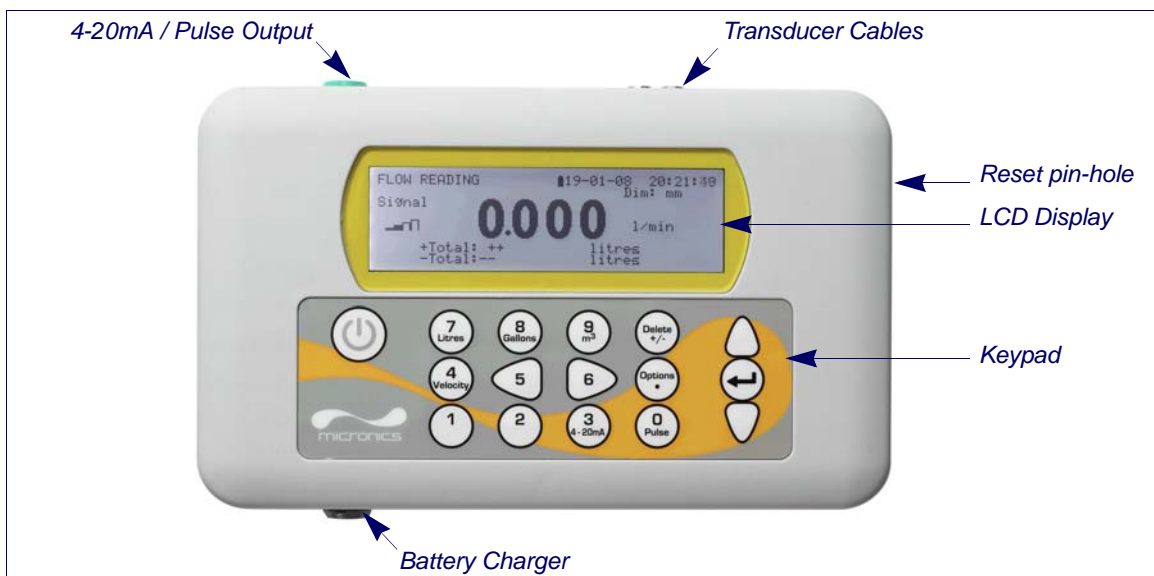


Figure 1.3 Instrument details

#### Transducer connections

The transducers are connected to two colour-coded miniature coaxial sockets located on the top of the instrument. Using the red/blue connector cables provided, the upstream transducer should always be connected to the RED socket and the downstream transducer to the BLUE one for a positive flow reading. It is safe to connect or disconnect the cable while the instrument is switched on.

#### 4-20mA and Pulse output connection

The 4-20mA / 'pulse' output cable should be connected to the green 7-pin connector on the top of the flowmeter, as shown in [Figure 1.3](#). A single cable that can be adapted for use for either of these output functions is included in the Portaflow 220 kit. The 'tails' on the free end of the cable must be terminated to suit the intended application.

- Red – 4-20mA positive
- Black – 4-20mA negative
- White – Pulse output
- Green – Pulse return
- Thick Black – Cable screen

#### Battery charger connection

The supplied battery charger is connected to the instrument by means of the grey 2-pin connector on the bottom of the unit, as shown in [Figure 1.3](#).

---

**Note:** The above connectors have different key-ways to prevent incorrect cable connection.

---

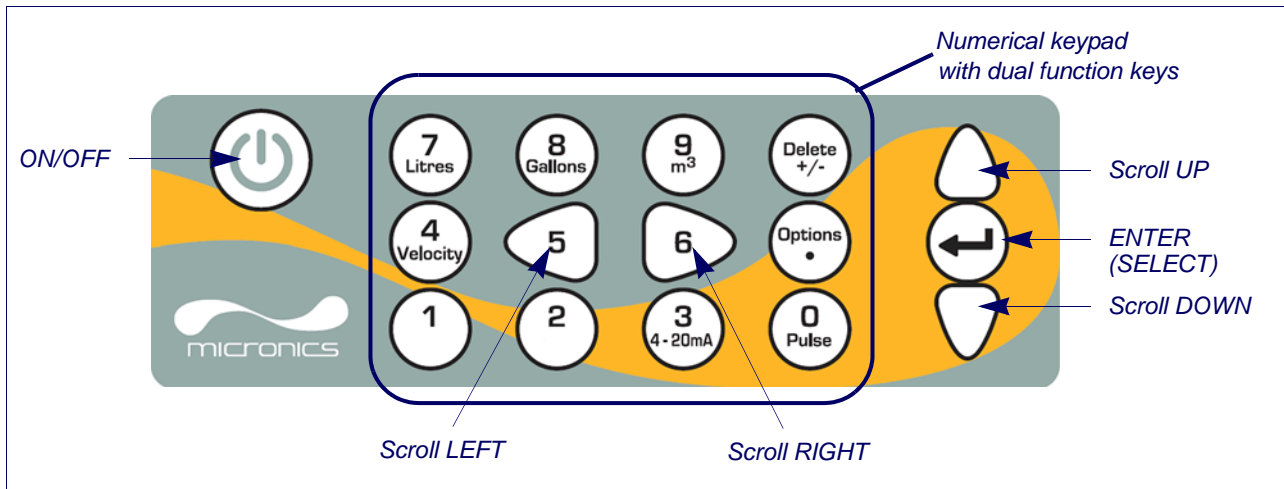


Figure 1.4 Keypad

### 1.4.2 Keypad

The instrument is configured and controlled via a 16-key tactile membrane keypad, as shown in [Figure 1.4](#).

#### **ON/OFF Key**

The ON/OFF key is shown on the top left of the keypad. When turned ON an initialisation screen is displayed on the LCD showing the instrument's serial number and software revision. Once this appears, the instrument can be started by pressing the ENTER key once – the initialization screen is then replaced by a MAIN MENU which provides access to the remaining functions.

#### **Menus and the menu selection keys**

The Portaflow 220 menus are arranged hierarchally with the MAIN MENU being at the top level. Menu navigation is achieved by three keys on the right hand side of the keypad which are used to scroll UP and DOWN a menu list and SELECT a menu item. When scrolling through a menu an arrow-shaped cursor moves up and down the left hand side of the screen to indicate the active menu choice which can then be selected by pressing the ENTER (SELECT) key.

Some menus have more options than can be shown on the screen at the same time, in which case the 'overflowed' choices can be brought into view by continuing to scroll DOWN beyond the bottom visible item. Menus generally 'loop around' if you scroll beyond the first or last items.

If you select Exit on any menu it usually takes you back up one level in the menu hierarchy, but in some cases it may go directly to the 'Flow Reading' screen.

Some screens require you to move the cursor left and right along the display as well as up and down. This is achieved using keys 5 (scroll LEFT) and 6 (scroll RIGHT).

#### **Dual function numerical keypad**

The block of keys shown in the centre of the keypad in [Figure 1.4](#) are dual function keys. They can be used to enter straight-forward numerical data, select the displayed flow units or provide quick access to frequently required control menus.

---

**Note:** Some of the features accessed by these keys are restricted in the Portaflow 220 model range. An "Option not available" message is displayed if you select a restricted function.

---

### 1.4.3 Power supply and battery charging

Operating power is provided by an internal battery that can be charged from the utility supply using the supplied external charger. When you first receive the unit you must put the battery on charge for a minimum of 6.5hrs before use. A fully charged battery will power the instrument for up to 20hrs depending on the output utilisation and backlight usage.

The backlight can be selected to be either permanently OFF, illuminated for 10 seconds, 30 seconds or 1 minute every time a key is pressed, or permanently ON – as configured in the Setup Instrument menu. If the backlight is active continuously it will reduce the available battery operating time to 8hrs. Similarly, if the 4-20mA output is used constantly at 20mA, the battery life would reduce by 50%. It is therefore beneficial to turn off the backlight and 4-20mA output facilities when they are not required.

When the instrument is operating in the 'Flow Reading' mode the percentage battery charge level is displayed symbolically on the LCD screen. A warning message is triggered if the charge falls to approximately 30%, at which point there is up to four hours of battery operation remaining, depending on usage. The battery can be charged both while the instrument is in use or when switched off. The instrument's internal data is stored in non-volatile memory and will not be lost even if the battery discharges completely.



**Key Point:** The battery is not a user-changeable item. The instrument must be returned to your distributor if the battery needs replacing.



**Key Point:** Only use the supplied charger, or special adaptor lead. Failure to comply with this will invalidate your warranty.

## 1.5 Transducers

Different transducer sets are provided with the PF220A and PF220B Portaflow models and are not interchangeable.



**Key Point:** Always use the transducers that were supplied with the instrument.

### **Transducer set 'A'**

Supplied as standard on PF220A for use on pipes 13mm to 115mm outside diameter.

### **Transducer set 'B'**

Supplied as standard PF220B for use on pipes 50mm to 1000mm outside diameter.

## 2: Installation

### 2.1 Transducer Positioning

In many applications an even flow velocity profile over a full 360° is unattainable due, for example, to the presence of air turbulence at the top of the flow and possibly sludge in the bottom of the pipe. Experience has shown that the most consistently accurate results are achieved when the transducer guide rails are mounted at 45° with respect to the top of the pipe.

The Portaflow equipment expects a uniform flow profile as a distorted flow will produce unpredictable measurement errors. Flow profile distortions can result from upstream disturbances such as bends, tees, valves, pumps and other similar obstructions. To ensure a uniform profile the transducers must be mounted far enough away from any cause of distortion such that it no longer has an effect.

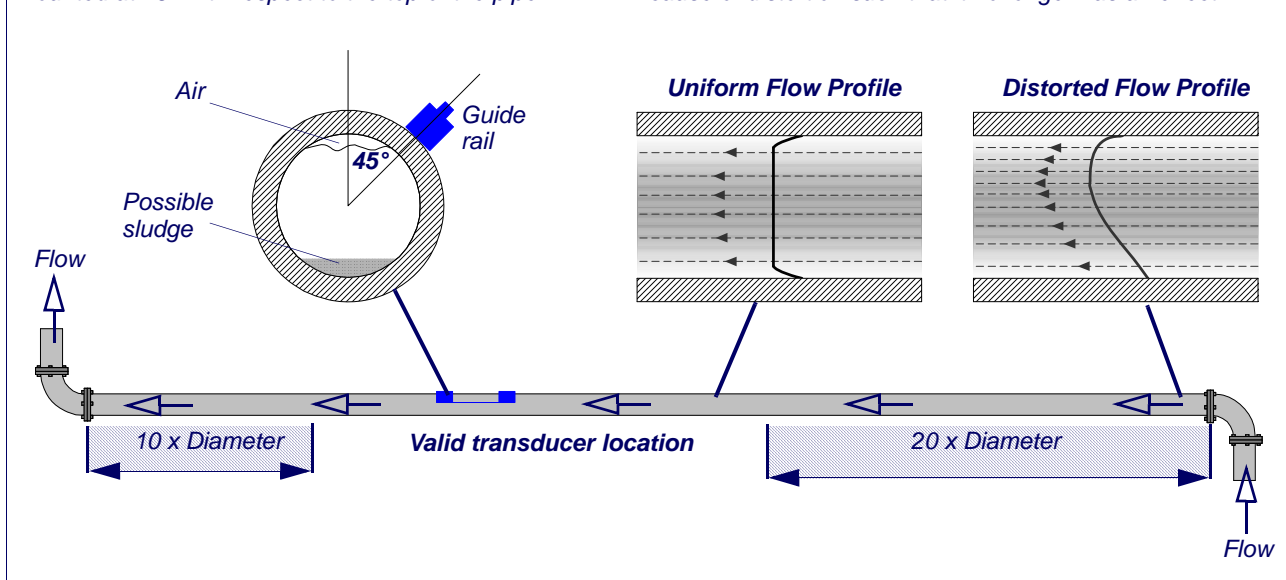


Figure 2.1 Locating the transducers

To obtain the most accurate results the condition of both the liquid and the pipe wall must be suitable to allow the ultrasound transmission along its predetermined path. It is important also that the liquid flows uniformly within the length of pipe being monitored and that the flow profile is not distorted by any upstream or downstream obstructions. This is best achieved by ensuring there is a straight length of pipe upstream of the transducers of at least 20 times the pipe diameter and 10 times the pipe diameter on the downstream side, as shown in [Figure 2.1](#). Flow measurements can be made on shorter lengths of straight pipe, down to 10 diameters upstream and 5 diameters downstream, but when the transducers are positioned this close to any obstruction the resulting errors can be unpredictable.



**Key Point:** Do not expect to obtain accurate results if the transducers are positioned close to any obstructions that distort the uniformity of the flow profile.

## 2.2 Transducer Attachment

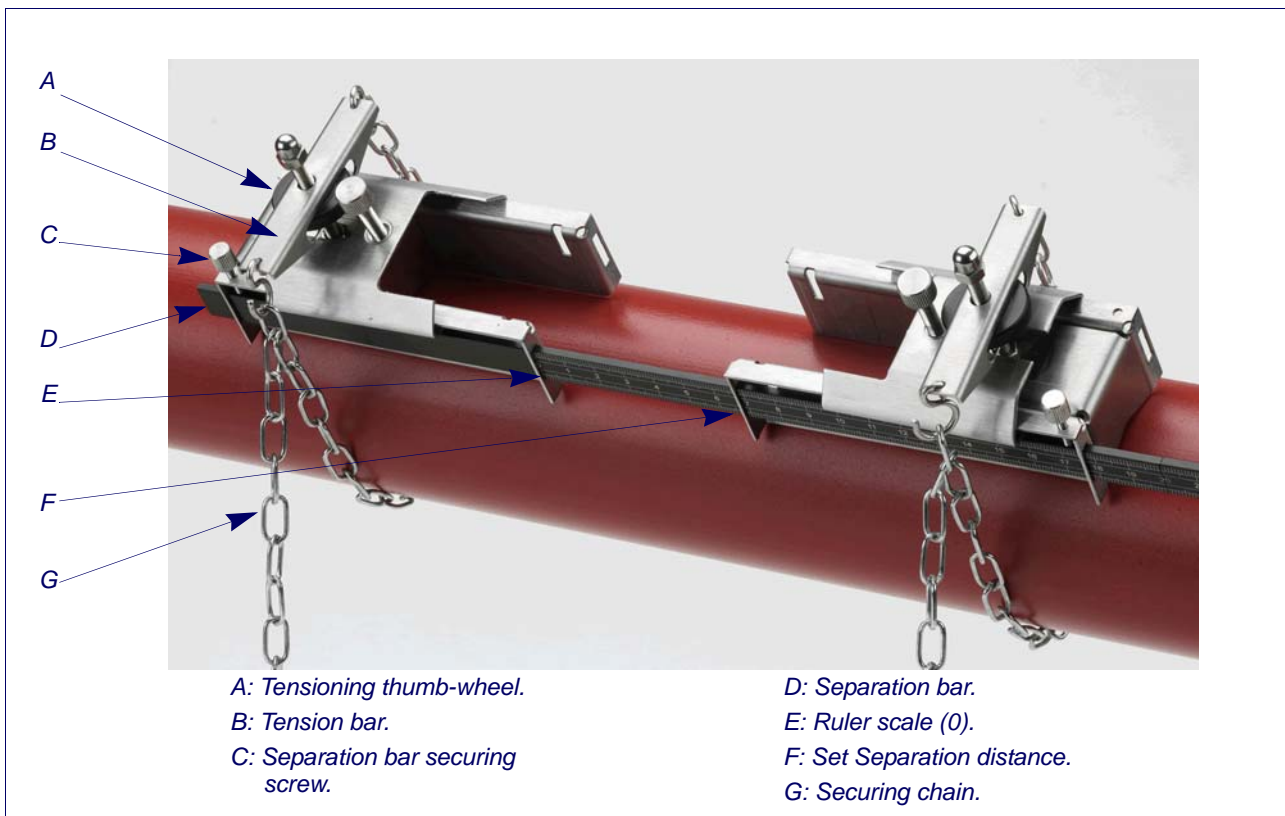
The transducers are fitted to adjustable guide rails which are secured to the pipe using wrap-around chains and mechanically connected together by a steel separation bar. The separation bar also acts as a ruler to allow the distance between the transducers to be accurately set to the value determined by the Portaflow instrument.

When fitting the guide rails it is easiest to assemble them onto the separation bar and adjust to the required separation distance before attaching them to the pipe.

### 2.2.1 Preparation

1. Before you attach the transducers you should first ensure that the proposed location satisfies the distance requirements shown in [Figure 2.1](#) otherwise the resulting accuracy of the flow readings may be affected.
2. Prepare the pipe by degreasing it and removing any loose material or flaking paint in order to obtain the best possible surface. A smooth contact between pipe surface and the face of the transducers is an important factor in achieving a good ultrasound signal strength and therefore maximum accuracy.

### 2.2.2 Attaching the guide rails



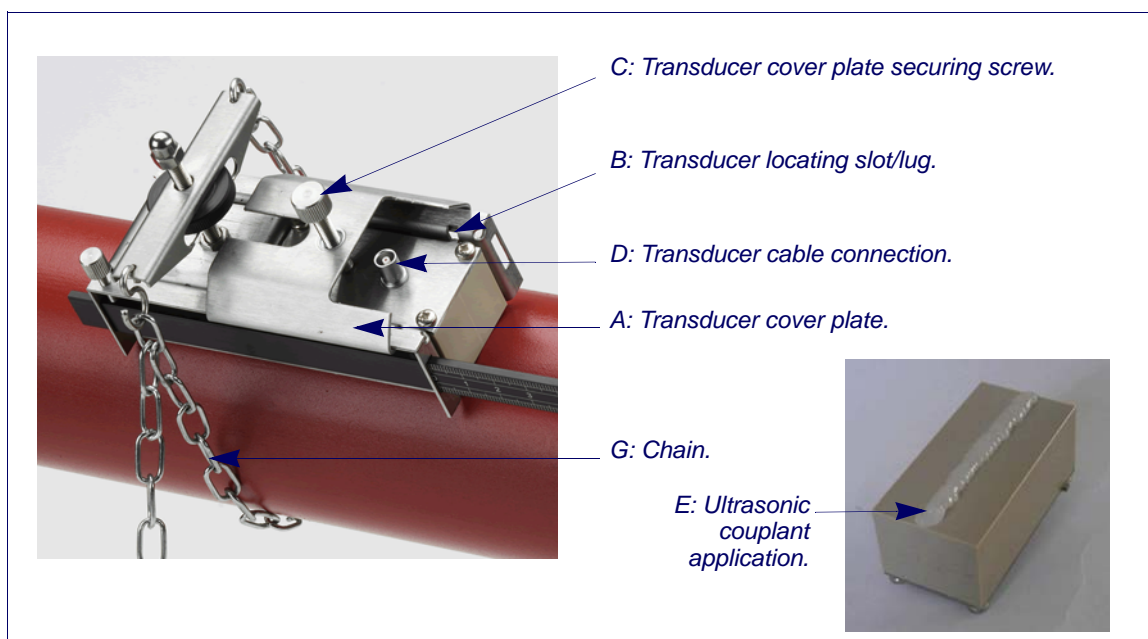
**Figure 2.2 Guide rail attachment**

1. Slide the separation bar (D) into the front of the left hand guide rail, align the front edge of the guide rail with '0' on the ruler scale (E) and secure it in place by tightening the thumbscrew (C).
2. Slide the other end of the separation bar into the front of the right hand guide rail, align the front edge of the guide rail to the required separation distance (obtained from the Portaflow instrument) on the ruler (F), then secure it in place by tightening the thumbscrew.

3. On each guide rail, attach one end of a securing chain to a hook on the tensioning bar (B), wrap the chain (G) around the pipe and then attach it to the hook on the other end of the tensioning bar whilst keeping the chain as tight as possible.
4. Rotate the complete guide rail assembly so that it is approximately 45° with respect to the top of the pipe. Then tighten the chain by turning the tensioning thumb-wheel (A) on each guide block until the assembly is securely attached to the pipe.

**Note:** If you are unable to get sufficient tension on the chain to hold the assembly in place, fully slacken the tensioning thumb-wheel and shorten the effective length of the chain wrapped around the pipe by connecting the tensioning bar to the next link in the chain, then re-tension.

### 2.2.3 Fitting the transducers

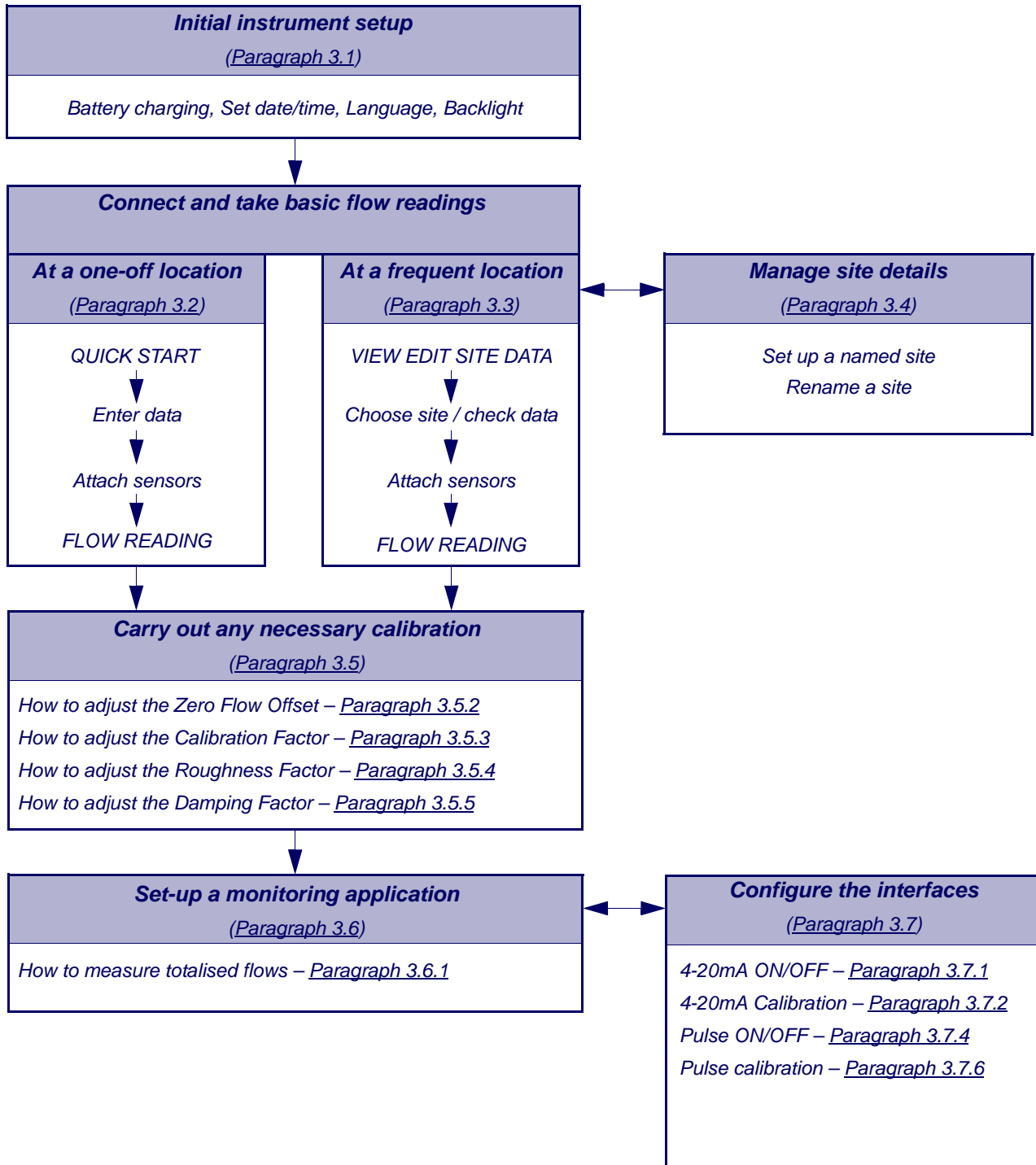


**Figure 2.3 Fitting the transducers**

1. Slide the transducer cover plate (A) fully towards the outside of the guide assembly to allow sufficient access to fit the transducer.
2. Clean the face of the transducer, removing all traces of dirt and grease.
3. Apply a 3mm bead of ultrasonic couplant along the centre length of the transducer (E).
4. Fit the transducer into the guide block – ensuring the lugs on the sides of the transducer are correctly located into the slots on the sides of the guide block (B).
5. Slide the transducer cover plate (A) over the top of the transducer and tighten the thumbscrew (C) finger tight to secure the transducer in place. When securing the cover plate take care to leave sufficient room around the transducer connector (D) to connect the cable.
6. Repeat the above steps for the second transducer.
7. Connect the transducers to the Portaflow instrument using the coaxial cables provided. The RED cable must be connected to the upstream transducer and the BLUE cable to the downstream transducer.



# 3: Operating Procedures



### 3.1 Setting-up the Instrument

#### 3.1.1 Using the instrument for the first time

Before you use your Portaflow 220 for the first time you should first charge the battery, then select the display language and set-up the internal clock, as described below.

##### Charging the battery

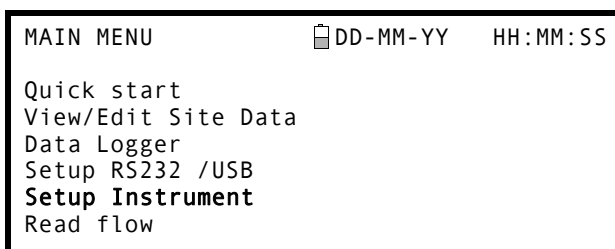
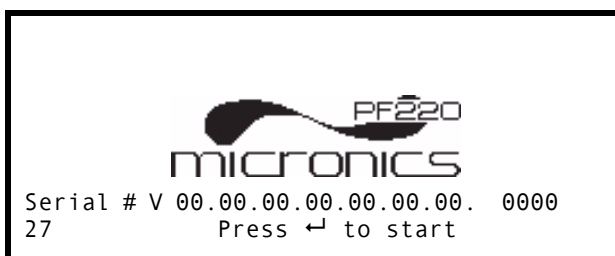
1. Connect the external battery charger to the charger socket at the bottom of the instrument then switch on the utility supply.
2. The instrument should indicate CHARGING and an animated battery symbol indicates that the battery is taking on charge.
3. Leave the instrument on charge for 6.5 hours before using it for the first time.



##### Selecting a language

The first time you switch on the instrument you may be asked to select a user language.

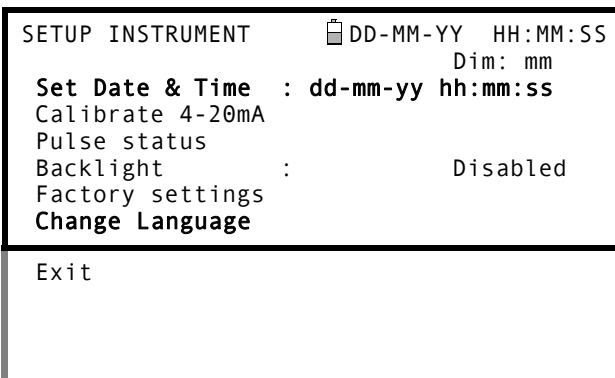
1. Switch on the instrument by pressing the ON/OFF button.
2. If necessary, select the required language using the UP /DOWN scroll keys then press the ENTER key.
3. The selected language will be the default when the instrument is next used. To change the language again select the Change Language option in the SETUP INSTRUMENT screen (see below).
4. The initialisation screen will be displayed, giving details of the instrument's serial number and software revision details.
5. Press ENTER to start the instrument.
6. This is the MAIN MENU and is the starting point for all the operations described in this chapter.



**Note:** Data Logger and RS232/USB functions are not implemented on the PF220.

##### Setting the Date & Time

1. Select Setup Instrument from the MAIN MENU. The screen shown here should be displayed.
2. Select Set Date & Time and click ENTER.
3. A flashing cursor should appear under the first date number. Enter the date sequence in dd-mm-yy order then press ENTER.
4. Repeat this action to set the time.
5. Select Exit then press ENTER to return to the MAIN MENU.



**Note:** If you make a mistake when entering the data press the Delete key to move the cursor back to the number you wish to change, then continue. If you enter an invalid number an 'ERR:Invalid Date or Time!' error message is displayed on the second line of the screen. If this occurs repeat the set date/time procedure.

#### 3.1.2 Enabling/disabling the backlight

The backlight can be selected to be either Disabled, illuminated for 10 seconds, 30 seconds or 1 minute every time a key is pressed, or ON permanently. If the backlight is not required it is recommended that you disable it to prolong the battery discharge time.

1. Select Setup Instrument from the MAIN MENU.
2. Select Backlight from the SETUP INSTRUMENT screen then press ENTER.

```

SETUP INSTRUMENT      DD-MM-YY HH:MM:SS
                        Dim: mm
Set Date & Time      : dd-mm-yy hh:mm:ss
Calibrate 4-20mA
Pulse output
Backlight           :           Disabled
Factory settings
Change Language

Exit
    
```

3. Select the backlight time as required.
4. Press ENTER to return to the SETUP INSTRUMENT screen.
5. Select Exit then press ENTER to return to the MAIN MENU.

```

BACKLIGHT             DD-MM-YY HH:MM:SS
                        Dim: mm
Disabled
10 seconds
30 seconds
1 minute
ON-Permanently
    
```

#### 3.2 Using the Quick Start Menu

If you want to perform a 'one-off' flow reading at a particular pipe location the Quick Start menu provides the quickest way to set up the Portaflow system and access the FLOW READING screen.

If the point at which you intend to take the measurement is likely to require regular monitoring it is best to set it up as a 'Site' within the Portaflow 220, which then stores the site parameters (See [Paragraph 3.4](#)).

Before you can use the Portaflow system you need to obtain the following details (this information will be required when setting up the Quick Start menu):

- The pipe outside diameter.
- The pipe wall thickness and material.
- The pipe lining thickness and material.
- The type of fluid.
- The fluid temperature.

##### Entering the site data

1. Select Quick Start from the MAIN MENU and press ENTER. You will then be presented with a series of screens in which to enter the data mentioned above.
2. Select the dimension units (millimetres or inches) used to measure the pipe, then press ENTER.

```

DIMENSION UNIT      DD-MM-YY HH:MM:SS

Select the dimension units:

➔mm
Inches
    
```

3. Enter the pipe outside diameter dimension, then press ENTER.

OUTSIDE DIAMETER	☰ DD-MM-YY	HH:MM:SS
Dimension:		mm
Pipe outside diameter?		58.0

4. Enter the pipe wall thickness dimension, then press ENTER.

PIPE WALL THICKNESS	☰ DD-MM-YY	HH:MM:SS
Dimension:		mm
Pipe outside diameter?		58.0
Pipe wall thickness?		4.0

5. If the pipe has a lining, enter the lining thickness.  
If nothing is entered the instrument automatically assumes there is no lining.
6. Press ENTER to continue.

PIPE LINING THICKNESS	☰ DD-MM-YY	HH:MM:SS
Dimension:		mm
Pipe outside diameter?		58.0
Pipe wall thickness?		4.0
Pipe lining thickness?		0.0

7. Select the pipe wall material from the list provided, then press ENTER.
- If the material is not listed select Other and enter the propagation rate of the pipe wall material in metres/sec. Contact Micronics if this is not known.

PIPE WALL MATERIAL	☰ DD-MM-YY	HH:MM:SS
<b>Select pipe wall material</b>		
Mild Steel		
S' less Steel 316		
S' less Steel 303		
Plastic		
Cast Iron		
Ductile Iron		
Copper		
Brass		
Concrete		
Glass		
Other (m/s)		

8. If a lining thickness value was entered earlier, this screen is displayed to request that you enter the lining material type. If no lining thickness was entered this screen will be bypassed.
9. Select the lining material from the list provided then press ENTER.

PIPE LINING MATERIAL	☰ DD-MM-YY	HH:MM:SS
<b>Select pipe lining material</b>		
Steel		
Rubber		
Glass		
Epoxy		
Concrete		
Other (m/s)		

If the material is not listed select Other and enter the propagation rate of the lining material in metres/sec. Contact Micronics if this is not known.

10. Select the fluid type from the list provided and press ENTER.

If the liquid is not listed select Other and enter a propagation rate in metres/second.

```

FLUID TYPE          DD-MM-YY  HH:MM:SS
Select fluid type
Water
Glycol/water 50%
Glycol/water 30%
Lubricating oil
-----
Diesel
Freon
Other (m/s)
    
```

11. If you need to alter the fluid temperature from that shown select either °C or °F with the cursor and press the ENTER key.
12. Enter the new temperature value and press the ENTER key.
13. The new temperature should now be indicated in both °C and °F.
14. Select Continue.. and press ENTER.

```

FLUID TEMPERATURE  DD-MM-YY  HH:MM:SS
Enter Fluid Temperature

°C: 5.00
°F: 41.00
Continue..
    
```

15. The SENSOR SEPARATION screen now displays a summary of the entered parameters and informs you of the mode of operation and the distance to set up between the sensors. It also shows the type of sensors in use – i.e. A-ST in the case of PF220A and B-ST for PF220B. In this example it shows the sensors operating in the 'Reflex' mode spaced at 32.2mm apart. Take a note of these details.

```

SENSOR SEPARATION  DD-MM-YY  HH:MM:SS
Site       : Quickstart
Pipe      : 58.00 mm
Wall     : 4.00
Sensors   : A-ST      Reflex
Temperature : 10.00°C 50.00°F
Set sensor separation to 32.2 mm
Press ← to continue, Δ▽ to select sens.
    
```

**Note:** Do not press ENTER until the transducers are fitted and connected to the instrument.

#### Attaching and connecting the transducers

16. Fit the sensors to the pipe using the appropriate guide rails as described in [Paragraph 2.2](#). Take great care to set the separation distance as accurately as possible.
17. Connect the red and blue coaxial cables between the sensors and the test instrument, ensuring that the red connector on the instrument is connected to the 'upstream' sensor.

#### Taking a flow reading

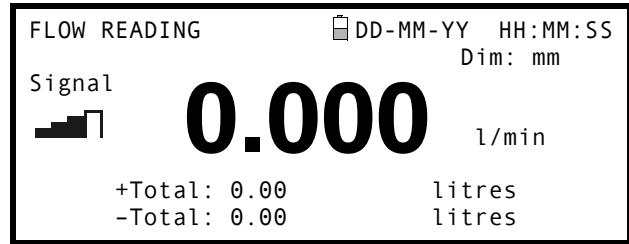
18. Once the transducers have been fitted and connected press the Enter key.
19. This will take you from the SENSOR SEPARATION screen to the FLOW READING screen via a signal-checking screen (shown here).

```

Please wait..
Checking signals

*****
*                                           *
*****
    
```

- Check that the indicated signal strength on the left of the screen is at least 2 bars (ideally 3 or 4). If less than 2 bars are shown it indicates there could be a problem with the transducer spacing, alignment or connections; or it could be due to an application problem.



**Flow monitoring**

The FLOW READING screen is the one most used during normal monitoring operation. It shows the instantaneous fluid flow together with totalised values (when enabled). In this mode you can select the flow rate measurement units by pressing keys 7 (litres), 8 (Gallons, Barrels) or 9 (m³), or change the display to show velocity by pressing key 4.

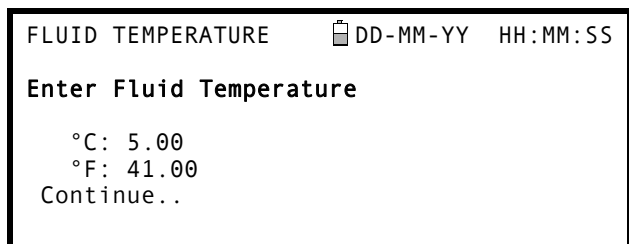
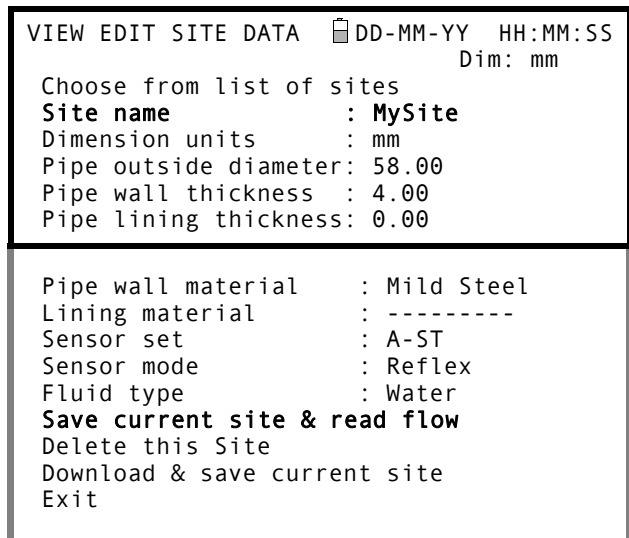
**3.3 Using the System at a Regularly Monitored Location**

Setting up the Portaflow system using the Quick Start method described in Paragraph 3.2 is easy and the recommended method to use in a 'one-off' situation. But if you have a site location that you want to monitor on a frequent basis it is better to set up a named 'Site' for that location so that you can recall it when needed and so avoid the need to re-enter the site details every time you want to install the equipment there.

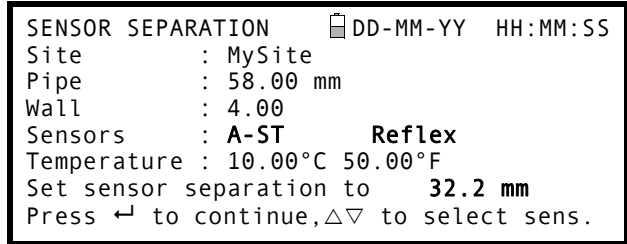
*Note: See Paragraph 3.4 for details of how to set-up and manage site details.*

Use this procedure to install the equipment at a named site.

- Select View / Edit Site Data from the MAIN MENU.
- Select Choose from list of sites.
- Select one of the sites listed and press ENTER.
- The Site name will show the selected site and the site parameters will be listed on the screen.
- Scroll down through the menu list and enter/change any data that might have changed since the last time the site was accessed.
- When you are satisfied that the parameters are correct select Save current site & read flow.
- If you need to alter the fluid temperature from that shown select either °C or °F with the cursor and press the ENTER key.
- Enter the new temperature value and press the ENTER key.
- The new temperature should now be indicated in both °C and °F.
- Select Continue.. and press ENTER.



- The SENSOR SEPARATION screen now displays a summary of the entered parameters and informs you of the type of sensor to be used, the mode of operation and the distance to set up between the sensors.  
In this example it recommends type A-ST (A standard) sensors operating in the 'Reflex' mode spaced 32.2mm apart.  
Take a note of these details.



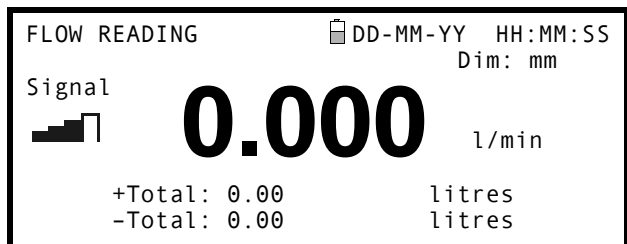
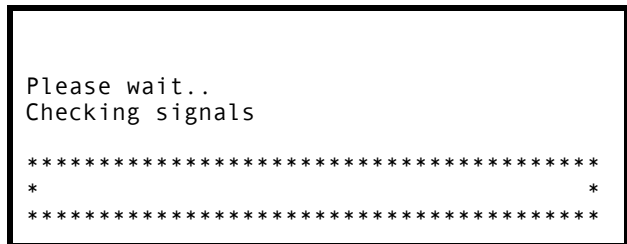
**Note:** If you press ENTER before the transducers are fitted and connected to the instrument, the instrument will detect a low signal strength and may indicate an ERROR condition.

#### Attaching and connecting the transducers

- Fit the designated sensors to the pipe using the appropriate guide rails as described in [Paragraph 2.2](#). Take great care to set the separation distance as accurately as possible.
- Connect the red and blue coaxial cables between the sensors and the instrument, ensuring that the red connector on the instrument is connected to the 'upstream' sensor.

#### Taking a flow reading

- Once the transducers have been fitted and connected press the ENTER key.
- This will take you from the SENSOR SEPARATION screen to the FLOW READING screen via a signal-checking screen (shown here).
- Check that the indicated signal strength on the left of the screen is at least 2 bars (ideally 3 or 4). If less than 2 bars are shown it indicates there could be a problem with the transducer spacing, alignment or connections; or it could be due to an application problem.



#### Flow monitoring

The FLOW READING screen is the one most used during normal monitoring operation. It shows the instantaneous fluid flow together with totalised values (when enabled). In this mode you can select the flow rate measurement units by pressing keys 7 (litres), 8 (Gallons, Barrels) or 9 (m³), or change the display to show velocity by pressing key 4.

### 3.4 Managing Named Sites

If you want to monitor a particular site location frequently you can set up a named 'Site' to store the installation details, such as pipe dimensions and material, required to set-up the Portaflo 220 system. These can then be recalled later when revisiting that particular location.

The instrument can store up to 20 sites, the first site is reserved for QUICK START and cannot be renamed; subsequent sites are initially named EmptySite1 through to EmptySite19.

### 3.4.1 Setting up a new site

1. Select **View / Edit Site Data** from the MAIN MENU.
2. Select **Choose from list of sites**.
3. Select one of the **EmptySites** from the presented list (e.g. **EmptySite 1** as shown).
4. Select **Site name** and press ENTER.

```
VIEW EDIT SITE DATA  DD-MM-YY  HH:MM:SS
                               Dim: mm
Choose from list of sites
Site name           : EmptySite1
Dimension units       : mm
Pipe outside diameter: 58.00
Pipe wall thickness  : 4.00
Pipe lining thickness: 0.00
```

5. This opens the **ALTER NAME** screen.
6. Select **Alter the Site Name** and you will be presented with a screen which allows you to enter a new name in much the same way as when composing a mobile text message.
7. On completion press ENTER then select **Exit**. This will take you back to the **VIEW EDIT SITE DATA** screen.

```
ALTER NAME  DD-MM-YY  HH:MM:SS
Site name   : EmptySite1
Do you wish to:-
Alter the Site Name
Exit
```

8. Scroll down through the menu list and enter/change the pipe parameters and other data pertaining to the site.

```
VIEW EDIT SITE DATA  DD-MM-YY  HH:MM:SS
                               Dim: mm
Choose from list of sites
Site name           : MyNewSite
Dimension units     : mm
Pipe outside diameter: 58.00
Pipe wall thickness : 4.00
Pipe lining thickness: 0.00
```

9. When all the data is correct you can either:
  - a) Select **Save current site & read flow** to continue fitting the transducers and opening the **FLOW READING** screen.
  - b) Select **Delete this site** to delete the site name and values and restore it to the original **EmptySite** name.
  - c) Select **Exit** to return to the MAIN MENU.

```
Pipe wall material  : Mild Steel
Lining material     : -----
Sensor set         : A-ST
Sensor mode        : Reflex
Fluid type         : Water
Save current site & read flow
Delete this Site
Download & save current site
Exit
```

**Note:** The 'Download & save current site' option is disabled in the Portaflow 220 range.

### 3.4.2 Changing a site name

To change a site name use the same method described above for generating a new site: but in this case select a current site name to change rather than an **EmptySite**.

## 3.5 Instrument Calibration

The Portaflow is fully calibrated before it leaves the factory; however the following adjustments are provided to allow you to further 'fine tune' your instrument to suit local conditions and application where necessary. Apart from the zero flow offset adjustment, these are normally carried out only where the instrument is to be used in a permanent or semi-permanent location.

### 3.5.1 Adjusting the zero cut-off

This adjustment allows you to set a minimum flow rate (m/s) below which the instrument will indicate '0'. The default setting is 0.01 m/s but you may adjust this value if required.

1. With the instrument operating in FLOW READING mode, press the Options key to access the FLOW READING OPTIONS menu shown.
2. Select Zero Cutoff (m/s) and press ENTER.
3. Enter the value for the Zero Cutoff (e.g. 0.06 m/s) then press ENTER.
4. Scroll down to select Exit and press ENTER to return to the FLOW READING screen.

FLOW READING OPTION	DD-MM-YY	HH:MM:SS
Data review		
<b>Zero Cutoff (m/s)</b>	:	<b>0.00</b>
Set zero flow (m/s)	:	0.00
Damping (secs)	:	10
Totaliser	:	Run
Reset +Total		

### 3.5.2 Adjusting the set zero flow offset

The Portaflow instrument operates by comparing the time taken to send an ultrasonic signal between two transducers in either direction. A Set zero flow offset adjustment is provided to compensate for any inherent differences between the two sensors, noise pick-up, internal pipe conditions etc. It can be used to 'zero' the flow indication under no-flow conditions.



If you have adjusted the Zero Cutoff point to anywhere above '0' you must reset it to '0' before you can observe and adjust the Set zero flow offset, as its value is very small. Once the Set zero flow offset has been calibrated you can then reapply the Zero Cutoff if required.

1. Stop the liquid flow.
2. With the instrument in FLOW READING mode press the Velocity function key and observe the reading (m/s). Any reading other than 0.000 indicates an offset error and in practice this will typically be in the range  $\pm 0.005$  m/s (possibly higher on smaller diameter pipes). If a greater figure is shown it is worth calibrating the offset to obtain a more accurate result. Continue as follows:
3. Press the Options key to access the FLOW READING OPTION screen shown.
4. Select Set zero flow (m/s) and press ENTER.
5. Press ENTER on the subsequent screen to accept the change, which will return you to the screen shown.
6. Scroll down to select Exit and press ENTER to return to the FLOW READING screen.

FLOW READING OPTION	DD-MM-YY	HH:MM:SS
Data review		
Zero Cutoff (m/s)	:	0.00
<b>Set zero flow (m/s)</b>	:	<b>0.00</b>
Damping (secs)	:	10
Totaliser	:	Run
Reset +Total		



**Key Point:** In order to cancel any applied offset you must either read the flow via Quick Start or switch the Portaflow instrument OFF & ON. Any value that you trim-out using the offset adjustment will be added/subtracted from the flow reading across the whole range.

### 3.5.3 Adjusting the calibration factor



**Key Point: USE THIS FACILITY WITH CARE & ONLY WHERE NECESSARY**

The Portaflow instrument is fully calibrated before leaving the factory and under normal circumstances does not require further calibration when used on site.

This facility can be used to correct the flow indication where unavoidable errors occur due to the lack of a straight pipe or where the sensors are forced to be fitted close to the pipe-end, valve, junction etc.

Any adjustment must be made using a reference flowmeter fitted in the system.

With the system running:

1. Stop (Stall) the Portaflow's totaliser facility and zero it ([Paragraph 3.6.1](#)).
2. Run the Portaflow's totaliser to measure the total flow over a 30-60 minute period, and note the total flow indicated by the reference flow meter over the same period.
3. Calculate the % error between the Portaflow and reference meters. If the error is greater than  $\pm 1\%$  calibrate the Portaflow as detailed below.
4. Press the Options key to access the FLOW READING OPTION screen shown.
5. Scroll down and select Calibration factor.
6. Change the calibration factor according to the error calculated in step 3. For example, if the Portaflow was reading 1% high then increase the Calibration factor value by 0.010. Conversely, if the reading is 1% low then decrease the calibration factor to 0.990.
7. Press Enter to apply the change.
8. Select Roughness factor or Exit as required.

FLOW READING OPTION	DD-MM-YY	HH:MM:SS
Data review		
Zero Cutoff (m/s)	:	0.00
Set zero flow (m/s)	:	0.00
Damping (secs)	:	10
Totaliser	:	Run
Reset +Total		
Reset -Total		
<b>Calibration factor</b>	:	<b>1.000</b>
Roughness factor	:	0.01
Diagnostics		
Exit		

### 3.5.4 Adjusting the roughness factor

The roughness factor compensates for the condition of the internal pipe wall, as a rough surface will cause turbulence and affects the flow profile of the liquid. In most situations it is not possible to inspect the pipe internally and the true condition is not known. In these circumstances experience has shown that the following values can be used:

Pipe Material	Roughness Factor
Non ferrous metal Glass Plastics Light metal	0.01

Pipe Material	Roughness Factor
Drawn steel pipes: <ul style="list-style-type: none"> <li>Fine planed, polished surface</li> <li>Plane surface</li> <li>Rough planed surface</li> </ul>	0.01
Welded steel pipes, new: <ul style="list-style-type: none"> <li>Long usage, cleaned</li> <li>Lightly and evenly rusted</li> <li>Heavily encrusted</li> </ul>	0.1
Cast iron pipes: <ul style="list-style-type: none"> <li>Bitumen lining</li> <li>New, without lining</li> <li>Rusted / Encrusted</li> </ul>	1.0

With the system running in FLOW READING mode:

1. Press the Options key to access the FLOW READING OPTION screen shown.
2. Scroll down and select Roughness factor.
3. Change the roughness factor according to the pipe material and condition as described above.
4. Press Enter to apply the change.

FLOW READING OPTION		DD-MM-YY	HH:MM:SS
Data review			
Zero Cutoff (m/s)	:		0.00
Set zero flow (m/s)	:		0.00
Damping (secs)	:		10
Totaliser	:		Run
Reset +Total			
Reset -Total			
Calibration factor	:		1.000
<b>Roughness factor</b>	:		<b>0.01</b>
Diagnostics			
Exit			

#### 3.5.5 Adjusting the damping factor

By averaging-out the flow rate over several seconds, the Damping factor can be used to smooth out rapid changes in flow rate to prevent wild fluctuations in the displayed flow value. It has a range of 1, 10, 15, 20, 30, 50 seconds, with a default setting of 10.

With the system running in FLOW READNG mode:

1. Press the Options key to access the FLOW READING OPTION screen shown.
2. Scroll down and select Damping (secs).
3. This will open the DAMPING OPTIONS screen.

FLOW READING OPTION		DD-MM-YY	HH:MM:SS
Data review			
Zero Cutoff (m/s)	:		0.00
Set zero flow (m/s)	:		0.00
<b>Damping (secs)</b>	:		<b>10</b>
Totaliser	:		Run
Reset +Total			
Reset -Total			
Calibration factor	:		1.000
Roughness factor	:		0.01
Diagnostics			
Exit			

4. Select the value of the Damping factor as required to remove any unwanted display fluctuations. Increasing the value applies a greater smoothing affect.
5. Press Enter to apply the selection and return to the FLOW READING OPTIONS screen.

```

DAMPING OPTIONS      DD-MM-YY  HH:MM:SS
1 second
10 seconds
15 seconds
20 seconds
30 seconds
50 seconds
    
```



**Key Point:** If the damping factor is set too high the value displayed may appear stable but it may exhibit large step changes when the value is updated.

### 3.6 Performing Monitoring Functions

#### 3.6.1 How to measure totalised flows (manually)

The basic measurement indicated on the FLOW READING screen is the instantaneous flow rate, which in some applications may vary over a period of time. Average flow rates are therefore often required in order to get a better understanding of an application's true performance. This is simply achieved by noting the total flow over a specific period (for example 30-60 minutes) and then calculating the average flow rate over that period of time.

1. Press the Options key to access the FLOW READING OPTION screen shown.
2. If the Totaliser is indicating Run, select it and change it to Stall. Press ENTER.
3. Select Reset +Total and press ENTER.
4. Press ENTER on the subsequent screen to accept the reset.
5. Press ENTER again to return to the FLOW READING OPTIONS menu.

```

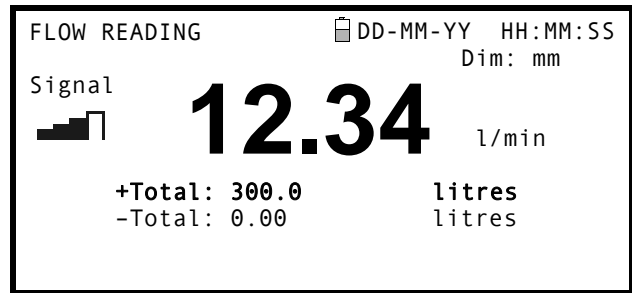
FLOW READING OPTION  DD-MM-YY  HH:MM:SS
Data review
Zero Cutoff (m/s)   :      0.00
Set zero flow (m/s) :      0.00
Damping (secs)     :      10
Totaliser         :      Stall
Reset +Total
    
```

6. Select Reset -Total and press ENTER.
7. Press ENTER on the subsequent screen to accept the reset.
8. Press ENTER again to return to the FLOW READING OPTIONS menu.
9. Note and record the current time.
10. Select Totaliser and change it to Run then press ENTER.  
Note: the totalisers begin to count up as soon as Totaliser is put to Run.

```

FLOW READING OPTION  DD-MM-YY  HH:MM:SS
Zero Cutoff (m/s)   :      0.00
Set zero flow (m/s) :      0.00
Damping (secs)     :      10
Totaliser         :      Run
Reset +Total
Reset -Total
    
```

- Scroll down and select **Exit** then press **Enter** to return to the **FLOW READING** screen which will now indicate the instantaneous flow together with the totalised flow.  
Note that in some installation the measured flow can be in either direction. Where this is the case the upstream flow is shown separately in the **-Total** field.



#### Calculating the average flow

To calculate the average flow wait for the allotted monitoring period to expire then divide the indicated total flow by the time taken. This will give you the average flow in m/s, galls/hour or whatever units you select.

Note that in a bi-directional flow situation you must take the difference between the indicated positive and negative flow totals before carrying out the average flow rate calculation.

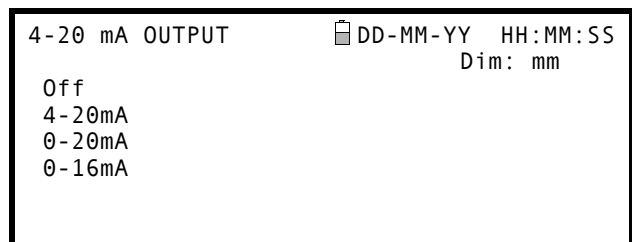
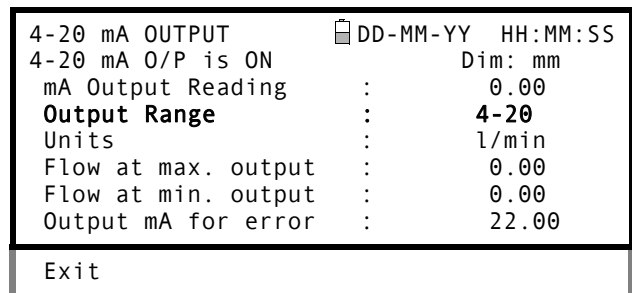
#### How to stop the totaliser temporarily

If, for operational reasons, you want to stop the totaliser function temporarily set the **Totaliser** option to **Stall** in the **FLOW READING OPTIONS** screen as described above. This will stop the totaliser operation without affecting its current values.

## 3.7 Configuring the Portaflow 220 Interfaces

### 3.7.1 How to turn the 4-20mA output OFF/ON

- With the instrument operating in the **FLOW READING** mode, press the **4-20mA** function key. This will access the **4-20mA OUTPUT** screen.
- The **ON/OFF** status of the **4-20mA** output is shown on line 2 of the display.
- To change the **ON/OFF** status select **Output Range** and press **ENTER**.
- Select **Off**, to turn **OFF** the **4-20mA** Output or select one of the output ranges to turn it **ON**.
- Press **ENTER** to return to the **4-20mA OUTPUT** screen.



### 3.7.2 4-20mA signal calibration and ranging

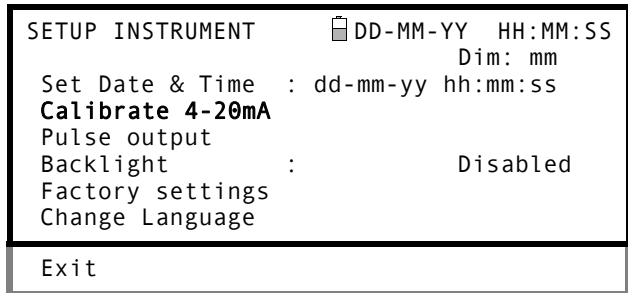


**Key Point:** The **4-20mA** output has been calibrated at the factory and should not require further adjustment. In the rare event that re-calibration is necessary, this procedure should be carried out only by a trained engineer.

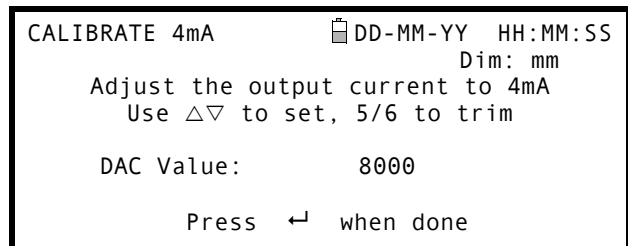
This procedure describes how to calibrate the **4-20mA** output and 'scale' it to operate over a defined flow-rate range.

**4-20mA Signal calibration**

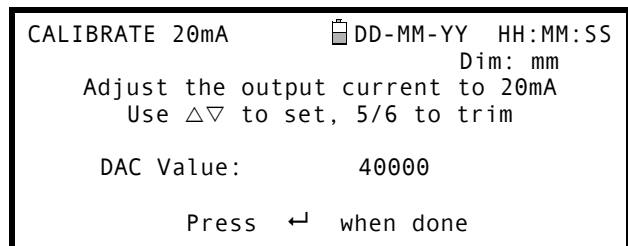
1. Select Setup Instrument from the MAIN MENU, to access the SETUP INSTRUMENT screen.
2. Select Calibrate 4-20mA.



3. Connect a calibrated ammeter to the 4-20mA output and adjust the UP/DOWN Scroll keys (Coarse) and LEFT/RIGHT Scroll keys 5 & 6 (fine) until the output is exactly 4.0mA. The DAC should indicate approximately 8000.
4. Press ENTER when done.



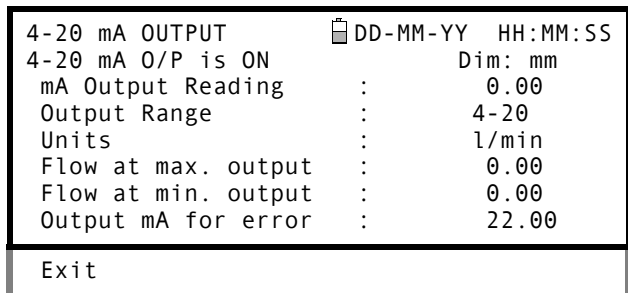
5. With the meter still connected to the 4-20mA output adjust the Scroll keys to obtain an output of exactly 20mA. The DAC should indicate approximately 40000.
6. Press ENTER when done.



**4-20mA Signal scaling**

**Note:** The 4-20mA can be set to represent a particular flow range. It is also possible to enter a negative figure for the minimum output and this would enable a reverse flow to be monitored.

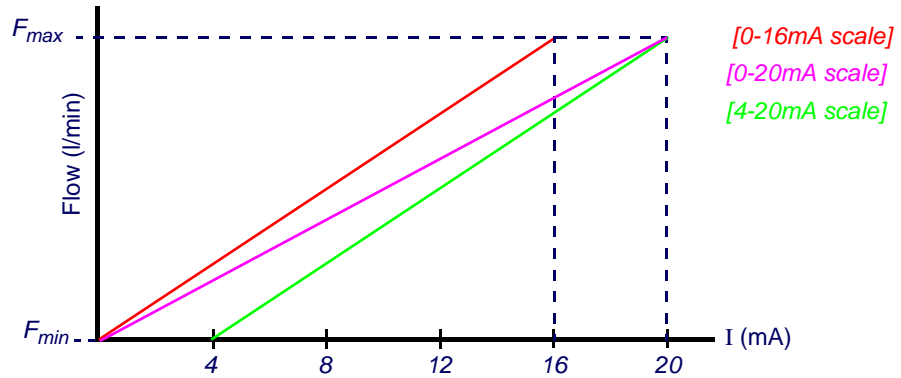
7. With the instrument operating in the FLOW READING mode, press the 4-20mA function key. This will access the 4-20mA OUTPUT screen.
8. Select Flow at max. output and enter a value of the flow rate that you want to associate with a 20mA output.
9. Select Flow at min. output and enter a value of the flow rate that you want to associate with a 4mA output. This could be '0'.



10. Select Output mA for error and enter a value (max of about 23mA) that you want the 4-20mA output to produce in the event of an error (e.g. if the flow-rate is outside the set range).
11. Upon completion press ENTER to return to the FLOW READING screen.

#### 3.7.3 How to convert the measured current to flow rate

Assume the maximum flow rate is  $F_{max}$  (l/min) and the minimum flow rate  $F_{min}$  is '0' (l/min), as shown.



To calculate the flow rate (l/min) for a measured current I(mA) then:

0-20mA	0-16mA	4-20mA
Flow rate = $\frac{I \times (F_{max} - F_{min})}{20} + F_{min}$	Flow rate = $\frac{I \times (F_{max} - F_{min})}{16} + F_{min}$	Flow rate = $\frac{(I - 4) \times (F_{max} - F_{min})}{(16)} + F_{min}$

#### 3.7.4 How to turn the pulse output OFF/ON

1. With the instrument operating in the FLOW READING mode, press the Pulse function key to access the PULSE OUTPUT screen.
2. A Pulse output is ON message appears in the second line of the display.
3. Select Exit and press ENTER to return to the FLOW READING screen.

```

PULSE OUTPUT      DD-MM-YY  HH:MM:SS
Pulse output is ON
Flow units        :          litres
Output            :          Off
Vol per pulse     :          10.00
Pulse width (ms) :          10
Exit
    
```

#### 3.7.5 Generating a 'Test' pulse

If the PULSE OUTPUT menu screen is accessed from the SETUP INSTRUMENT menu you can generate a 'test' pulse by selecting Flow units and pressing the Option key.

**Note:** This does not apply if the PULSE OUTPUT menu is accessed by pressing the Pulse key when operating in the FLOW READING mode.

### 3.7.6 Pulse output signal calibration

1. With the instrument operating in the FLOW READING mode, press the Pulse function key to access the PULSE OUTPUT screen.
2. To change the Flow units shown in this menu you must return to the FLOW READING screen and select the required units using keys 7,8 and 9.

PULSE OUTPUT	☰	DD-MM-YY	HH:MM:SS
<i>Pulse output is ON</i>			Dim: mm
Flow units	:		litres
Output	:		Off
Vol per pulse	:		10.00
Pulse width (ms)	:		10
Exit			

3. Select Vol per pulse and enter the required value. (In the example shown, a pulse is produced every 10 litres of flow).

---

**Note:** *The pulse Output must be Off in order to change the Volume per pulse setting.*

---

4. Select a pulse width (in ms) to suit the particular application – e.g. electro-mechanical counter. Refer to the manufacturer's data sheet for the minimum pulse width.
5. Select Exit and press ENTER to return to the FLOW READING screen.

## 4: Maintenance & Repair

This instrument does not contain any user-serviceable parts. The following notes are provided as a guide to general equipment care



**WARNING**

**Do not disassemble this unit unless advised by Micronics.  
Return the unit to an approved service agent or place of purchase  
for further advice.**

1. Ensure the unit is switched off and disconnected from the mains, then wipe the exterior of the instrument with a clean, damp cloth or paper towel. The use of a solvent may damage the surface.
2. The instrument contains a rechargeable battery, dispose safely and in accordance with the local regulations in force in the country of operation.
3. Ensure all cables and connectors are kept clean and free from grease or contaminants. Connectors may be cleaned with a general purpose cleaner if necessary.
4. Avoid the use of excessive grease/ultrasonic couplant on the sensors as this may impair the performance of the equipment. Excessive grease/couplant can be removed from the sensors and guide rails using an absorbent paper towel and a general purpose solvent cleaner.
5. We recommend that the ultrasonic couplant is replaced on the sensors every 6 months, especially on pipes where the application is too hot to touch. If the signal level drops below 30% this is also an indication that the sensors need re-greasing.
6. Regularly check all cables/parts for damage. Replacement parts are available from Micronics.
7. Ensure the person who services your instrument is qualified to do so. If in doubt, return the instrument to Micronics with a detailed report on the nature of any problem.
8. Ensure that suitable precautions are taken when using any materials to clean the instrument/sensors.
9. The instrument and sensors should be calibrated at least once every 12 months. Contact Micronics or your local service agent for details.
10. When returning product to Micronics make sure it is clean and please notify Micronics if the instrument has been in contact with any hazardous substances.
11. If the instrument was supplied with dust or dirt caps make sure they are re-fitted when the instrument is not in use.



# 5: Troubleshooting

## 5.1 Overview

If you have a problem with your flow monitoring system it can be due to any of the following:

### Faulty instrument

If you suspect the instrument is faulty you can check it out using a test block as described in [Paragraph 5.4](#). This will establish that the instrument is functional and receiving a healthy signal from the connected transducers.

### Incorrect setup

A low, or zero, signal could be caused by incorrect set-up such as:

- Incorrect site data entered into the instrument.
- Incorrect or non-matching ultrasonic transducers selected for use.
- Incorrectly fitted transducers – lack of couplant applied, incorrect spacing, insecure attachment.
- Poor connections between the probes and the instrument.

### Application problem

If you are certain that the instrument is healthy and suitably set-up for the current site; and the probes are properly assembled and fitted correctly, there could be an application problem concerned with the site.

Check such conditions such as:

#### *Poor pipe outer surface quality*

- Uneven surface preventing good surface contact with the transducer.
- Flaking paint (should be removed).
- Variable air gap in concrete-covered pipes affecting the ultrasonic signal quality.

#### *Poor internal pipe construction*

- Rough internal pipe walls affecting fluid flow (see roughness factor).
- Internal welds positioned in the transducer signal path affecting the signal quality.
- The 'drippings' in galvanised-dipped pipes or other irregularities interfering with the signal path.

#### *Incorrect probe location*

- Transducers located too close to bends or valves, disturbing the flow profile.
- Transducers located too close to insertion probes, disturbing the flow profile.
- For horizontal pipework transducers should not be positioned on the top of the pipe.

#### *Poor fluid conditions within the pipe*

- Fluid contains bubbles, high particle density or sludge.
- Air in the top of the pipe.

#### *Low fluid flow within the pipe*

- Pipe obstructions.
- Malfunctioning valve not opening fully (or closed inadvertently).

#### *Liquid content problems*

- Multiple liquid contents do not comply accurately to expected sound speed criteria.
- Very hot pipe almost turns water to steam and therefore exhibits the wrong speed characteristics – could be due to reduced pipe pressure.
- Flashover – liquid turns into a gas because of lower than required pressure.

## 5.2 General Troubleshooting Procedure

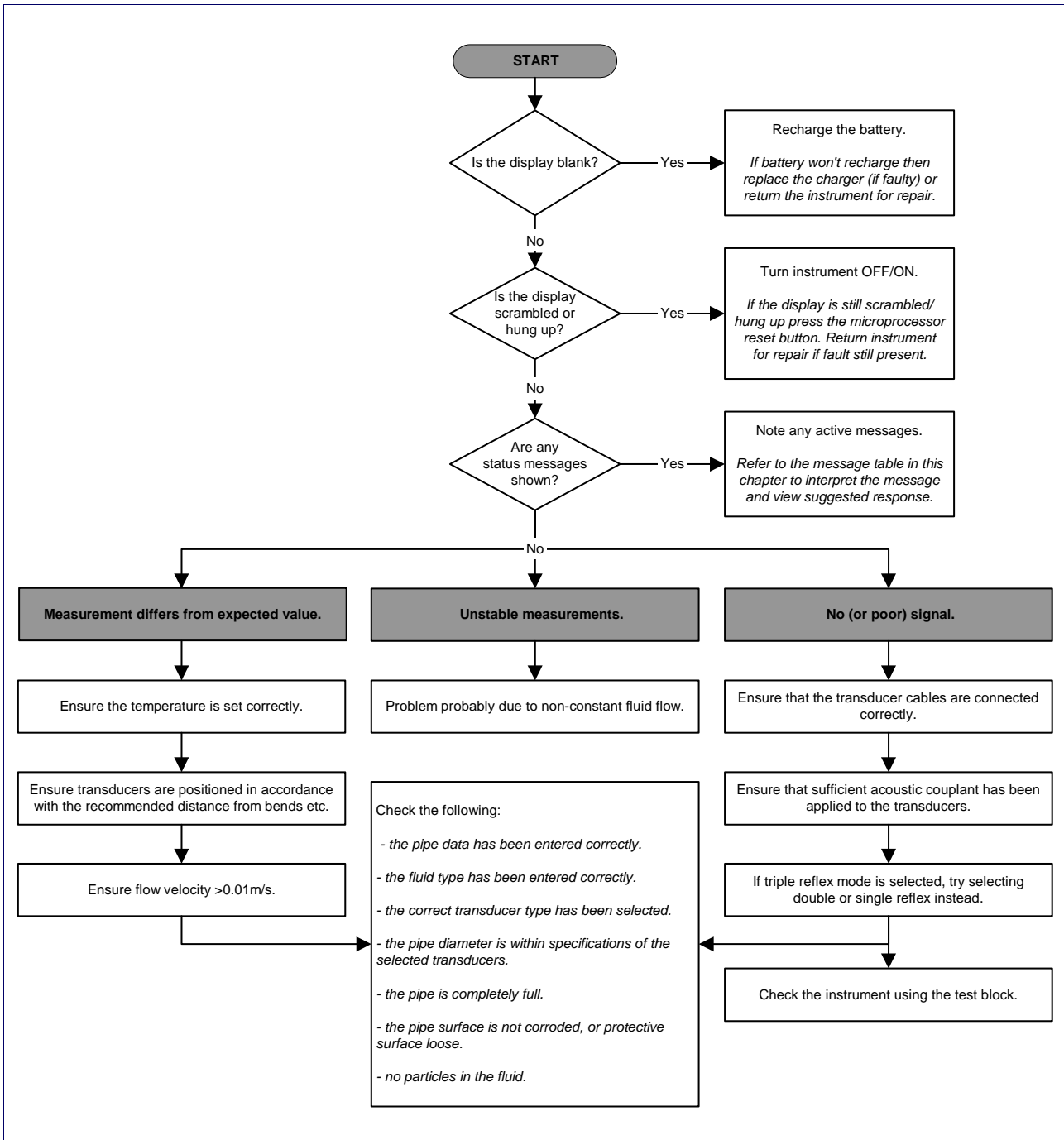


Figure 5.1 Troubleshooting chart

### 5.3 Warning & Status Messages

FLOW RATE ERRORS	
No flow signal	<p><b>Interpretation:</b> This message appears when the transducers cannot send or receive signals to each other.</p> <p><b>Response:</b> Firstly check that all cables are connected, transducers are on the pipe correctly with sufficient couplant on the face. This condition could also be due to a partially empty pipe, aerated liquid, particulate content too high or when the condition of the pipe being measured is poor.</p>
Flow signal is poor	<p><b>Interpretation:</b> This warning appears when the signal is lower than 25%.</p> <p><b>Response:</b> This could be due to an application problem, a poor quality pipe – see also the conditions for No flow signal (above). Check for sufficient couplant.</p>
Zero cut-off error!	<p><b>Interpretation:</b> You have entered an out-of-range value in the Zero cutoff field in the Options menu.</p> <p><b>Response:</b> Enter a valid number.</p>
Totaliser beyond maximum!	<p><b>Interpretation:</b> The totaliser has overflowed its maximum count. The counter will roll-over and restart from zero but this message alerts you to the fact.</p> <p><b>Response:</b> Reset the totaliser as described in <a href="#">Paragraph 3.6.1</a>.</p>

PULSE ERRORS	
Pulse Rate > Max	<p><b>Interpretation:</b> The flow rate exceeds the capability of the pulse output – i.e. too many pulses per second are required than can be achieved.</p> <p><b>Response:</b> Narrow the pulse width time or increase the volume per pulse, as described in <a href="#">Paragraph 3.7.6</a>.</p>
Pulse volume error!	<p><b>Interpretation:</b> You have entered an out-of-range value in the Pulse volume error field in the PULSE OUTPUT menu – see <a href="#">Paragraph 3.7.6</a>.</p> <p><b>Response:</b> Enter a valid number.</p>
Pulse width error	<p><b>Interpretation:</b> You have entered an out-of-range value in the Pulse width error field in the PULSE OUTPUT menu – see <a href="#">Paragraph 3.7.6</a>.</p> <p><b>Response:</b> Enter a valid number.</p>

4-20mA ERRORS	
mA out > Max	<p><b>Interpretation:</b> The actual flow is higher than the maximum set on the mA range.</p> <p><b>Response:</b> Re-scale the 4-20mA output to be able to cope with the higher flow – see <a href="#">Paragraph 3.7.2</a>.</p>
Calibration 20mA Error!	<p><b>NOTE:</b> The 4-20mA output is calibrated before the instrument leaves the factory and should not require further adjustment.</p> <p><b>Interpretation:</b> You have adjusted the DAC outside its accepted range when calibrating the 20mA signal output.</p> <p><b>Response:</b> Re-calibrate the 4-20mA output – see <a href="#">Paragraph 3.7.2</a>.</p>
Calibration 4mA Error!	<p><b>NOTE:</b> The 4-20mA output is calibrated before the instrument leaves the factory and should not require further adjustment.</p> <p><b>Interpretation:</b> You have adjusted the DAC outside its accepted range when calibrating the 4mA signal output.</p> <p><b>Response:</b> Re-calibrate the 4-20mA output – see <a href="#">Paragraph 3.7.2</a>.</p>

SET-UP ERRORS	
Pipe OD out of range	<p><b>Interpretation:</b> You have entered an out-of-range value for the pipe outside diameter dimension – i.e. larger or smaller than the unit or sensor can be used on.</p> <p><b>Response:</b> Enter a valid number.</p>
Wall thickness out of range	<p><b>Interpretation:</b> You have entered an out-of-range value for the pipe wall thickness dimension – accepted range is 1mm - 75mm.</p> <p><b>Response:</b> Enter a valid number.</p>
Lining thickness out of range	<p><b>Interpretation:</b> You have entered an out-of-range value for the lining thickness dimension – acceptable range is 0mm - 25mm.</p> <p><b>Response:</b> Enter a valid number.</p>
Temperature range	<p><b>Interpretation:</b> You have entered an out-of-range value for the fluid Temperature. Accepted temperature range -20°C to +300°C.</p> <p><b>Response:</b> Enter a valid number.</p>
Invalid Date or Time	<p><b>Interpretation:</b> The entered Date or Time is invalid, or when setting up 'timed' data logging the Stop time is set earlier than the Start time.</p> <p><b>Response:</b> Enter a valid Date and Time.</p>
Sensors: INVALID	<p><b>Interpretation:</b> The selected temperature is higher than the maximum allowed for the sensor type.</p> <p><b>Response:</b> Enter a different temperature.</p>
Mode: Err Typ	<p><b>Interpretation:</b> The selected sensors are invalid and the mode cannot be verified.</p> <p><b>Response:</b> Select a mode that gives a non-zero separation distance.</p>

BATTERY ERRORS	
Battery Low	<p><b>Interpretation:</b> The battery has discharged to below 30% remaining. This leaves the instrument with approximately 4 hours remaining, depending on power usage, before it needs recharging.</p> <p><b>Response:</b> Recharge the internal battery at the earliest opportunity. Do not leave the instrument for a prolonged period with a fully discharged battery.</p>
Battery Exhausted	<p><b>Interpretation:</b> The battery is approaching a fully discharged state and the instrument is about to store the internal data and shut-down.</p> <p><b>Response:</b> Recharge the battery.</p>

### 5.4 Test Block

A test block is included with the Portaflow 220 equipment to allow the transducers and inter-connecting cables to be functionally checked.

1. Switch ON the instrument.
2. Select Quick start and enter the parameters shown in the table below for the appropriate transducer type (A or B):

Parameter	A Sensors	B Sensors
Pipe outside diameter	30.0mm	50.0mm
Pipe wall thickness	14.0mm	22.0mm
Pipe lining thickness	0.00	0.00
Pipe wall material	Plastic	Plastic
Fluid type	Water	Water
Mode	Diagonal	Diagonal
Temp	20°C	20°C

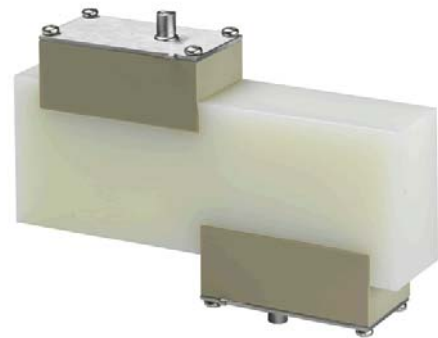


Figure 5.2 Test block

3. When the above data is entered, the SENSOR SEPARATION screen will be displayed.
4. Press either the UP/DOWN cursor key to go to the SENSOR SELECTION menu.
5. Select Sensor mode and position the cursor at Diagonal and press ENTER to return to the SENSOR SELECTION menu.
6. Select Exit and press ENTER to return to the SENSOR SEPARATION screen.
7. Check that the parameters displayed are correct.
8. Apply acoustic couplant to the sensors and attach them to the test block with the connectors positioned towards the centre of the test block as shown, and temporarily secure them in place using elastic bands or tape.
9. Connect the sensors to the Portaflow 220 instrument using the cables provided.
10. Press ENTER to go to the FLOW READING screen.
11. Select the Options key to go to the FLOW READING OPTION menu and set the Damping to at least 10 seconds.

12. Select **Exit** and press **ENTER** to return to the **FLOW READING** menu.
13. The flow reading value displayed is not important. The fact that a reading is obtained indicates that the instrument is functioning. This value may fluctuate but this is normal.
14. The signal strength indicator at the left of the display should show 3–4 bars.

## 5.5 Microprocessor Reset Facility

In the rare event that the Portaflow 220 instrument appears to totally hang-up, or displays total gibberish, you can reset its microprocessor by carefully inserting a straightened paperclip into the pinhole located in the right-hand side of the instrument to operate the internal reset switch. Hold the paperclip perpendicular to the instrument while doing this.

## 5.6 Diagnostics Display

This feature is designed for advanced users and is intended to provide information that will aid the user to diagnose problems – e.g. no signal strength.

When operating in the **FLOW READING** mode you can access a diagnostics screen by pressing the **Options** function key and then selecting **Diagnostics** from the **FLOW READING OPTIONS** screen. This will display the operating values for the following parameters.

### **Calculated time ( $\mu\text{s}$ )**

This is a value the instrument predicts will be the time in  $\mu\text{secs}$  that it should take for the acoustic wave to propagate across a particular pipe size. This value is ascertained from the data entered by the user. i.e. Pipe size, material, sensor set etc.

### **Actual time ( $\mu\text{s}$ )**

This is the value the instrument measures as the time taken for the acoustic wave to propagate across the pipe. It is used to see if the signal is being taken from the burst, at the correct time to get the strongest signal. This value is normally a few  $\mu\text{s}$  below the calculated  $\mu\text{s}$  value. If, however, this value is much greater than the calculated time then there is a problem with the set-up.

### **Flow (m/s)**

This displays flow velocity in m/sec to 3 decimal places.

### **Signal strength**

This is the averaged value of Signal and should be a value between 800 and 1600 – where 800 is approximately 50%, and 1600 is approximately 100%.

### **Gain**

Gain values are typically in the range 600 to 850.

### **Switches**

Typical Switches values are None and \*10. On small pipes (and when using the test block) the value should be None. A Switch value of \*100 indicates poor sensor set-up or poor connections.

### **UP/DN time difference**

The difference in transit times between the upstream and downstream signals due to the fluid flow.

### **Fluid propagation rate**

This is the sound speed of the fluid calculated using the data entered by the user.

### **Sensor separation**

The same value as displayed in the setup screen.

## Appendix A: Specification

<b>GENERAL</b>	
<b>NEW!</b> DSP Measurement Technique:	Transit time.
Timing Resolution:	50 pico-seconds, continuous signal level indication on display.
<b>Improved!</b> Flow Velocity Range:	Minimum Velocity 0.1m/s; Max Velocity 20m/s: Bi-directional.
Turn Down Ratio:	100:1
Accuracy:	±0.5% to ±2% of flow reading for flow rate >0.2m/s and Pipe ID >75mm. ±3% of flow reading for flow rate >0.2m/s and Pipe ID in range 13mm - 75mm. ±6% of flow reading for flow rate < 0.2m/s.
Repeatability:	±0.5% of measured value or ±0.02m/s whichever is the greater.
<b>NEW!</b> Reynolds Number Correction:	Flow velocity corrected for Reynolds number over entire velocity range.
Response Time:	< 500ms depending on pipe diameter.
Selectable Flow Units:	VELOCITY: m/sec, ft/sec. VOLUME: l/s, l/min, l/h, gal/min, gal/h, USgals/min, USgals/h, Barrel/h, Barrel/day, m³/s, m³/min, m³/h.
Selectable Volume Units:	l, gal, USgals, Barrel, m³.
Total Volume:	12 Digits - forward and reverse.
<b>APPLICABLE FLUID TYPES</b>	
Fluid Condition:	Clean liquids or oils that have less than 3% by volume of particulate content. Applications include river water, sea water, potable water, demineralised water, glycol/water mix, hydraulic systems and diesel oil.
<b>APPLICABLE PIPE TYPES</b>	
Pipe Materials:	Any sonic conducting medium such as Carbon Steel, Stainless Steel, Copper, UPVC, PVDF, Concrete, Galvanised Steel, Mild Steel, Glass, Brass. Including Lined Pipes - Epoxy, Rubber, Steel, Plastic.
Pipe Dimension (outside diameter):	PF220A 13mm – 115mm. PF220B 50mm – 1000mm.
Pipe Wall Thickness:	1mm - 75mm.
Pipe Lining:	Applicable pipe linings include Rubber, Glass, Concrete, Epoxy, Steel.
Pipe Lining Thickness:	0mm – 25mm.
Pipe Wall Temperature Range:	Sensor operating temperature is -20°C to +135°C.
<b>TRANSDUCER SETS</b>	
Standard transducers:	Temperature Range -20°C to +135°C. PF220A – Type 'A-ST' (2MHz). PF220B – Type 'B-ST' (1MHz).

<b>LANGUAGES</b>	
Standard Supported Languages:	English, French, German, Italian, Spanish, Portuguese, Russian, Norwegian, Dutch, Swedish.
<b>OUTPUTS</b>	
Analogue Output: Resolution: Alarm Currents: Isolation: Maximum Load:	4–20mA, 0–20mA, 0–16mA. 0.1% of full scale. Any between 0–26mA. 1500V Opto-isolated. 620 Ohms.
Pulse Output TTL: Pulse Repetition Rate: Pulse Width:  Max Current:	Number Available: Opto-isolated MOSFET relay. Up to 500 pulses/sec (depending on pulse width). 500ms for 1pulse/sec. 5ms for 100 pulses/sec. 150mA.
<b>ELECTRICAL</b>	
<b>Supply Voltage:</b>	
Input Voltage Range:	9–24Vdc.
Power Consumption:	10.5W.
<b>Battery:</b>	
Technology:	5-cell NiMH.
Capacity:	3.8Ahr.
Operating Time:	Typically 20 hours continuous with backlight and 4-20mA output OFF.
Recharge Time:	6.5 Hours.
Service Life:	>500 charge/discharge cycles.
<b>Power Supply/Charger:</b>	
Manufacturer:	ECOPAC Model ECO-181WP12.
Input Voltage Range:	90–264Vac.
Input Frequency Range:	47–63Hz.
Output Voltage:	12Vdc.
Max. Output Current:	1.5A.
Approvals:	UL, CUL, TUV, CB & CE.
<b>MECHANICAL</b>	
<b>Carrying case:</b>	
Rating:	All components are contained in a hard-wearing polypropylene carrying case with a protective moulded foam insert.
<b>Enclosure:</b>	
Material:	Flame retardant injection moulded ABS.
Dimensions:	264mm x 168mm x 50mm.
Weight (Including Battery):	1.1 kg.
Protection:	IP54.

<b>Keypad:</b>	
No. Keys:	16.
<b>Display:</b>	
Format:	240 x 64 pixel graphic display, high contrast black-on-white, with backlight.
Viewing Angle:	Min 30°, typically 40°.
<b>ENVIRONMENTAL</b>	
Operating Temperature:	-20°C to +50°C.
Storage Temperature:	-25°C to +65°C.
Operating Humidity:	90% RH MAX at +50°C.
Charging Temperature:	0°C to +40°C.
<b>APPROVALS</b>	
Safety:	BS EN 61010.
EMC:	BS EN 61326 - 1:2006, BS EN 61326-2-3:2006.
Battery Charger:	EN61204 - 3.
<b>SHIPPING INFORMATION</b>	
Box Dimensions:	505mm x 125mm x 420mm.
Weight:	6.0 kg.
Volumetric Weight:	4.5 kg.
<p><b><i>Micronics reserve the right to alter any specification without notification. PORTAFLOW™ 220 and PF220 are identical.</i></b></p>	



## CE Declaration of Conformity



MICRONICS

## CE Declaration of Conformity

### Micronics Ltd

Knaves Beech Business Centre  
Davies Way, Loudwater,  
High Wycombe, Bucks.  
HP10 9QR

### Ultrasonic Clamp on Flow Meter Portaflow 330, 220A, 220B models.

This product is manufactured in accordance with the following Directives and Standards.

**Directive 2004/108/EC of the European Parliament and of the Council of 15 December 2004 on the approximation of the laws of the Member States relating to electromagnetic compatibility.**

**Directive 2006/95/EC of the European Parliament and of the Council of 12 December 2006 on the harmonisation of the laws of Member States relating to electrical equipment designed for use within certain voltage limits.**

BS EN 61010-1:2001 Safety requirement for electrical equipment for measurement control and laboratory use. Part 1 General requirements


BS EN61326-1:2006 Electrical equipment for measurement control and laboratory use EMC requirements. Part 1: General requirements

BS EN61326-2-3:2006 Electrical equipment for measurement control and laboratory use EMC requirements. Part 2-3: Particular requirements – Test configuration and performance criteria for transducers with integrated or remote signal conditioning.

(Included accessory battery charger not manufactured by Micronics complies with EN61204 – 3)

I, the undersigned, hereby declare that the equipment specified above conforms to the above Directive(s) and Standard(s).

Signature:



Printed Name:

Michael Farnon

Title:

Managing Director

Date:

26<sup>th</sup> February 2009

Registered Office: Micronics Limited, Knaves Beech Business Centre, Davies Way, Loudwater, Buckinghamshire, HP10 9QR

Web site: [www.micronicsltd.co.uk](http://www.micronicsltd.co.uk) Tel: +44 (1628) 810456 Fax: +44 (1628) 531540

Directors: E.J. Farnon, M.A. Farnon

Registration No. 1289680 V.A.T. Registration No. 303 8190 91

